

4925 Sandyland
Road Unit A

Carp State
Beach

4900-5000 Sandyland Rd

4900-5000 Sandyland Rd, Carpinteria, CA, 93013

Price: \$ 26,000 /Monthly
MLS #: 21-1547



NUMBER OF
BEDS

3



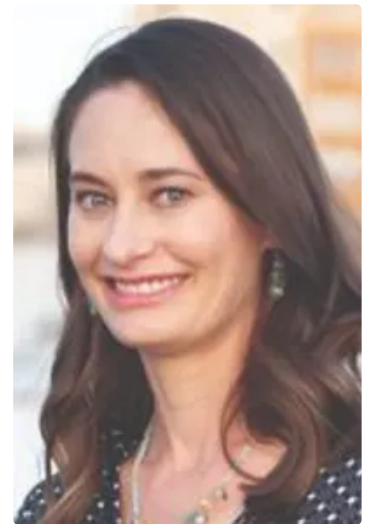
IN SQ. FT.
AREA

1,825

This beachfront condo with panoramic ocean and island views is located in the heart of Carpinteria, moments from "the worlds safest beach", shops, parks, and restaurant's this beach town has to offer. This single level condo is situated on the 2nd story and hosts 3 bedrooms & 3 full baths, open living area, expansive ocean & mountain views, multiple balconies, fireplace, and is updated throughout. This bright and cheery condo receives great natural lighting throughout as well as that ocean breeze we all love. The gated assigned parking garage is located below the condo and includes 2 spots. Enjoy the indoor/outdoor lifestyle to its fullest in this fun beachfront condo! Available furnished from May 15th, 2021 on...\$26,000/mo for a 30 day rental\$24,000/month for 2+ month booking

Amenities

- Garage



Crysta Metzger

Sales Associate
License Number: 01340521

Montecito, California 93108

+1 805-453-8700

crystmetz@me.com

<https://www.coldwellbankerluxury.com/crysmetz-cf>

Languages I speak

- English

I can advise you on:

- Vacation Homes
- Buyer Representation

<http://www.linkedin.com/in/crystametzger>

Listed by: Coldwell Banker Realty

Powered by collabra
SHOWCASE

Information on this website is provided by real estate professionals or developers and/or their representatives. Prices, details and availability may change; please verify any information with a real estate professional or the developer. Collabra is not responsible for any errors or omissions. This is not an offer to sell. Collabra fully supports the principles of the Fair Housing Act and the Equal Opportunity Act.

