

# 2525 E Alameda Circle

2525 E Alameda Circle, Denver, CO, 80209

Price: \$ 1,550,000  
MLS #: 2798239

  
NUMBER OF  
BEDS  
**4**

  
NUMBER OF  
BATHROOMS  
**5 | 1-½**

  
IN SQ FT.  
AREA  
**5,128**

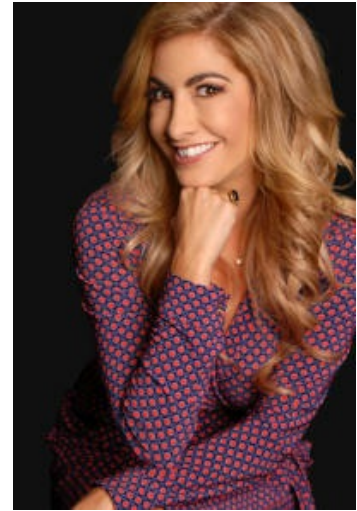
  
IN ACRES  
LOT  
**0.36**

  
PROPERTY AGE  
YEAR BUILT  
**1959**

Buyers got cold feet before inspection!! Imagine owning a stunning, estate in Cherry Creek's exclusive Polo Grounds neighborhood! That dream can be your reality with the rare opportunity to own a ranch model with the bonus of having over a 1/3 acre exquisitely designed, landscaped lot with over 5,000 square feet. From the moment you walk into the foyer, your eyes will be drawn to the architecturally designed open floor plan. Soaring ceilings coupled with oversized windows allow the natural light to pour through the home. The conception was to allow for the Colorado outdoor experience while being indoors. Entertain in your chef's kitchen w/ viking professional 6 gas burner range & subzero refrigerator. The Master suite has the convenience of an adjacent laundry room, the romantic ambiance of a 3 way fireplace & jetted sunk in tub, separate California custom closets, vanities & a private patio completes the Master wing. The lower level has a spacious media room, gym w/ full bath, plus storage. Do not miss your opportunity to own this Polo Grounds home. For a VIRTUAL TOUR PLEASE GO TO [https://youtu.be/DS0\\_kfA0dU0](https://youtu.be/DS0_kfA0dU0)

## Amenities

- Garage
- Air conditioning
- Fireplace(s)



## Shannon Byerly

Sales Associate

Lakewood, Colorado 80228

+1 303-919-2611

[shannon.byerly@coloradohomes.com](mailto:shannon.byerly@coloradohomes.com)

<https://www.coldwellbankerluxury.com/shannon-byerly>

Languages I speak

- English

I can advise you on:

Listed by: Coldwell Banker Residential Brokerage

Powered by 

Information on this website is provided by real estate professionals or developers and/or their representatives. Prices, details and availability may change; please verify any information with a real estate professional or the developer. Collabra is not responsible for any errors or omissions. This is not an offer to sell. Collabra fully supports the principles of the Fair Housing Act and the Equal Opportunity Act.

